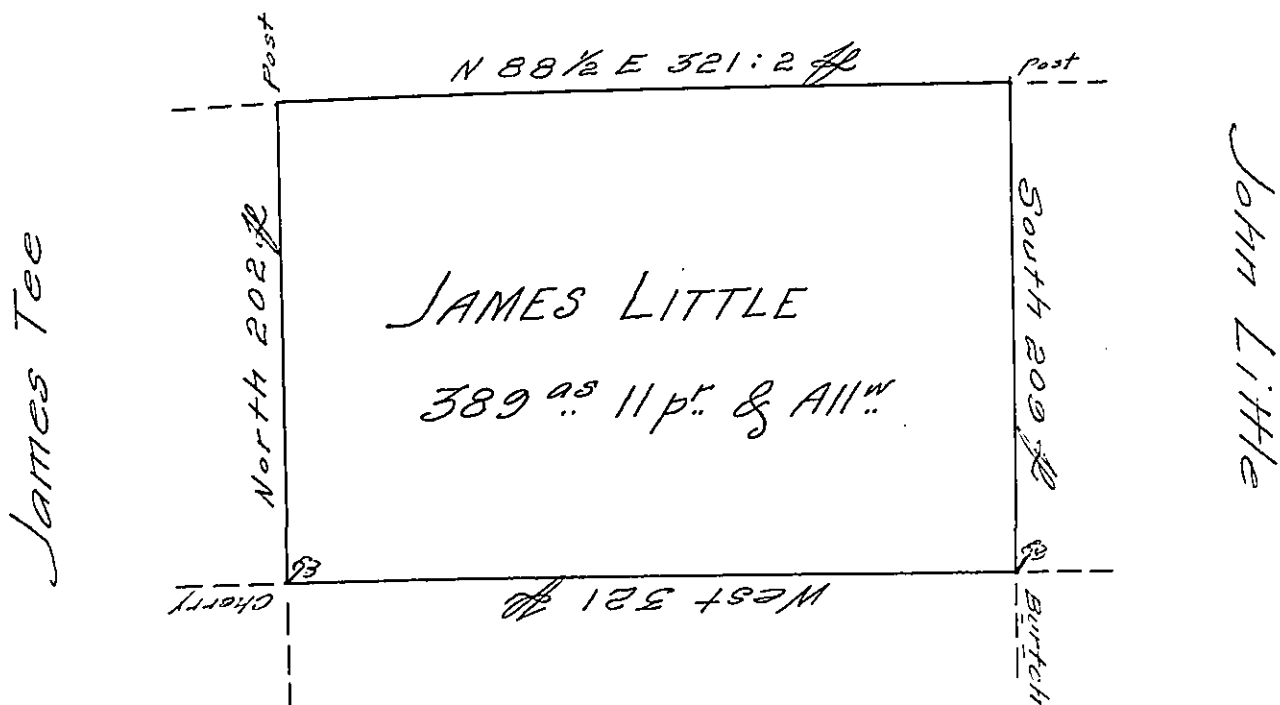


District line No 1



Joseph Long

Situate on the East side of French Creek in the County of Allegheny adjoining John Little and others Containing 389 Acres 11 perches and allowance of Six $\frac{1}{2}$ Cent for Roads &c. Surveyed the 27th day of May 1795 In pursuance of his Improvement Bearing date the 26th day of May 1795.

W^m Power D^y Sr.

To Daniel Brodhead Esq^r }
 Surveyor General }

IN TESTIMONY that the above is a copy of the original remaining on file in the Department of Internal Affairs of Pennsylvania, made conformably to an Act of Assembly approved the 16th day of February, 1833, I have hereunto set my Hand and caused the Seal of said Department to be affixed at Harrisburg, this twenty-seventh day of September 1906

Isaac D. Power
 Secretary of Internal Affairs.